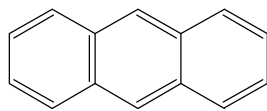
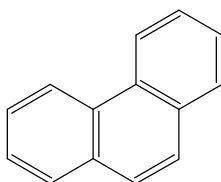


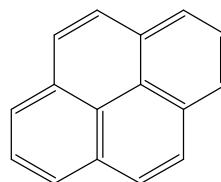
Naphthalin



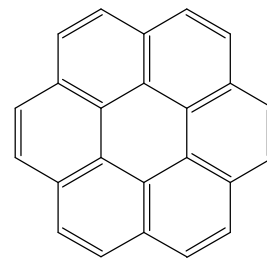
Anthracen



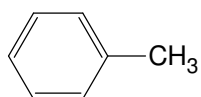
Phenanthren



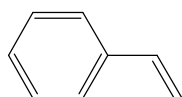
Pyren



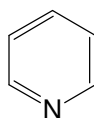
Coronen



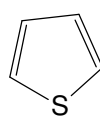
Toluol



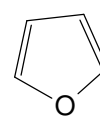
Styrol



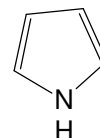
Pyridin



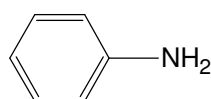
Thiophen



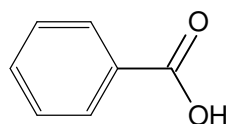
Furan



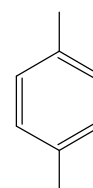
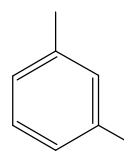
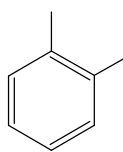
Pyrol



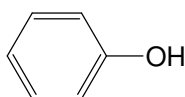
Anilin



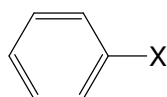
Benzoessäure



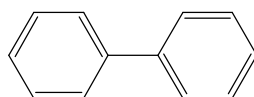
o- / m- / p- Xylol



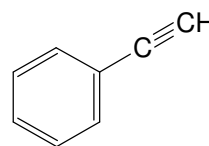
Phenol



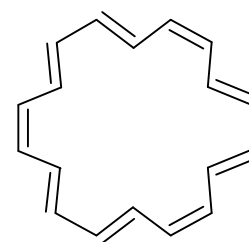
Phenyl



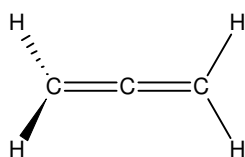
Biphenyl



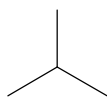
Phenylacetylen



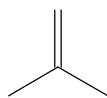
Annulea



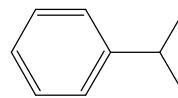
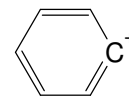
Allen



iso-Butan



iso-Buten

Cumen
(i-propyl-Benzol)

Tropyliumion