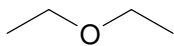
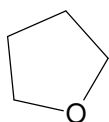
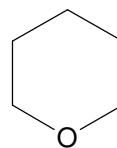
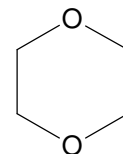
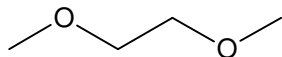
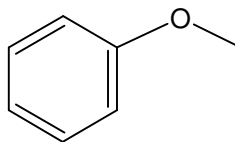
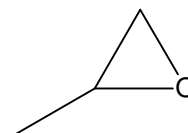
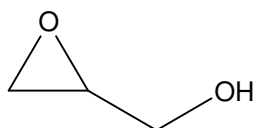
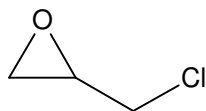
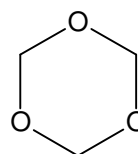
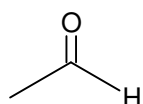
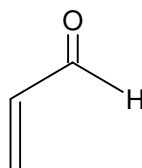
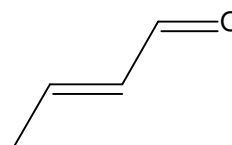
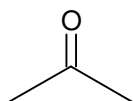
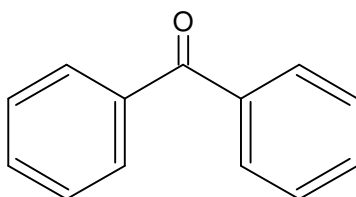
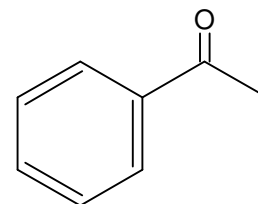


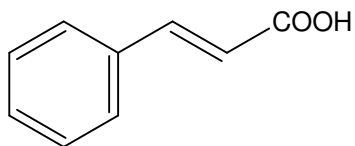
Ether

**Diethylether****Tetrahydrofuran****Tetrahydropyran****1,2 Dioxan****1,2 Dimethoxyethan****Phenylmethylether
(Amisol)****Ethylenoxid****Propylenoxid****Glycidol****Epichlorhydrin****Trioxam**

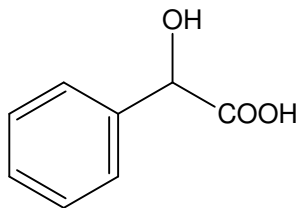
Aldehyde und Ketone

**Formaldehyd****Acrolein****Crotonaldehyd****Aceton****Benzophenon****Acetophenon**

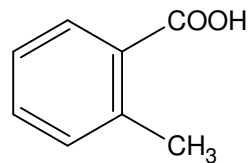
Carbonsäuren



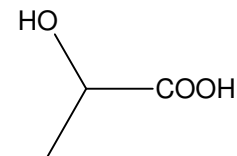
Zimtsäure



Mandelsäure

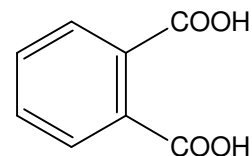
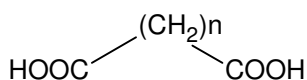


Salicylsäure

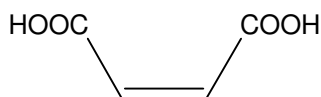


Milchsäure

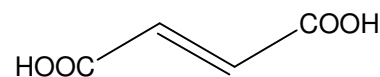
n	Name
0	Oxalsäure
1	Malonsäure
2	Bernsteinsäure
3	Glutensäure
4	Adipinsäure



Pthalsäure

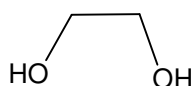


Maleinsäure

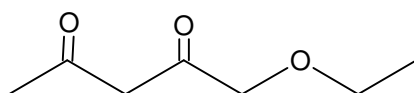


Fumersäure

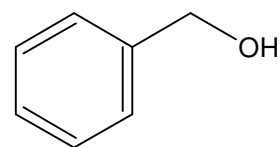
Verschiedenes



Glykol



Acetessigester



Benzylalkohol